

Construction update and bus stop changes

Adelaide Street tunnel testing and commissioning

June-August 2025

Brisbane Metro

As part of the Brisbane Metro project, Brisbane Move is nearing completion of the new Adelaide Street tunnel. Once complete, the Adelaide Street tunnel will provide a dedicated connection between the Inner Northern Busway and South East Busway and address congestion bottlenecks in Brisbane's CBD.

From **Friday 20 June to late August 2025**, Brisbane Move will undertake testing and commissioning activities to prepare the new Adelaide Street tunnel for bus and metro operations.

These works will be undertaken on weekends and require a full closure of the Inner Northern Busway from Queen Street bus station to Roma Street busway station. This means **Queen Street bus station, City Hall/King George Square bus station and Roma Street busway station will be closed from midnight Friday to 4.30am Monday on each closure weekend**, with affected bus services temporarily redirected to alternative stops.

These activities will be undertaken continuously (24-hours

- Midnight Friday 20 June to 4.30am Monday 23 June
- Midnight Friday 27 June to 4.30am Monday 30 June
- Midnight Friday 4 July to 4.30am Monday 7 July
- Midnight Friday 11 July to 4.30am Monday 14 July
- Midnight Friday 18 July to 4.30am Monday 21 July
- Midnight Friday 25 July to 4.30am Monday 28 July
- Midnight Friday 1 August to 4.30am Monday 4 August
- Midnight Friday 8 August to 4.30am Monday 11 August
- Midnight Friday 15 August to 4.30am Monday 18 August
- Midnight Friday 22 August to 4.30am Monday 25 August.

Dates subject to change pending construction conditions.

During this time, metros will be replaced by existing Council buses. The M2 service will be identified as RM2 and the M1 service will be identified as RM1, after its commencement on 30 June.

Translink's Journey Planner will be updated, and signage will be installed at impacted bus stops. Please follow signage to access your regular service at alternative stops.

Testing and commissioning activities will include:

- control and software system testing
- communication and public announcement system testing
- lighting, fire and ventilation systems testing.

Businesses and residents in the CBD adjacent to the Inner Northern Busway from Queen Street bus station to Roma Street busway station may notice some smoke and hear alarms coming from or near the busway during these works.

Further information, including impacted services and temporary alternative stop locations, can be found on the Brisbane City Council website. Scan the QR code below or visit the *infrastructure and construction updates* page at metro.brisbane.qld.gov.au



Service information during the works

For updated service information during these weekend works, **visit translink.com.au or call 13 12 30.**

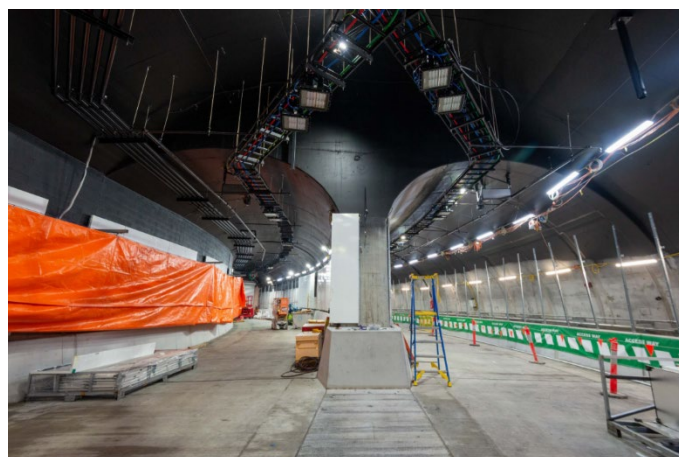


Image: Commissioning activities in the Adelaide Street tunnel

Funding partner

Delivery partner

An initiative of

1800 318 059

brisbanemetro@acciona.com

brisbane.qld.gov.au/brisbanemetro



Australian Government



Dedicated to a better Brisbane